

# MEN'S SS26 FASHION FORECAST



## SPRING/SUMMER 2026

IS NOT JUST A SEASON —  
IT'S A SHIFT.

A shift in how we express identity, embrace contrast, and design with purpose. This forecast captures the pulse of a world in motion, where fashion reflects both personal evolution and collective momentum. It's a season defined by tactile richness, expressive silhouettes, and a renewed focus on authenticity.

## **What to Expect in This Forecast**

This trend analysis offers a comprehensive breakdown of the key elements shaping the season:

- ▣ **Seasonal Mood & Macro Themes**
- ▣ **Color Forecasts** with emotional and cultural context
  - ▣ **Material & Texture Trends**
  - ▣ **Silhouettes & Proportions**
    - ▣ **Key Design Details**
    - ▣ **Prints & Patterns**
  - ▣ **Footwear & Accessories**
- ▣ **Activewear & Lifestyle Integration**

Each section is designed to inspire, inform, and guide creative decision-making across the fashion ecosystem.

## **Accessible, Adaptable, and Industry-Wide**

While rooted in high fashion, these trends are not exclusive to luxury markets. They are designed to be translated across price points and adapted to a wide range of industries, including:

- ▣ **Apparel & Accessories** (Luxury, Contemporary, Mass Market)
  - ▣ **Footwear**
  - ▣ **Beauty & Cosmetics**
  - ▣ **Home & Interior Design**
- ▣ **Retail & Visual Merchandising**
- ▣ **Textiles & Surface Design**
  - ▣ **Marketing & Branding**
  - ▣ **Lifestyle & Wellness**
  - ▣ **Product Design**

This forecast is a **creative toolkit**—not just for designers, but for anyone shaping the future of style, experience, and consumer connection.

## **Contact**

For inquiries, collaborations, or to request a custom trend report:

**Keona Woodson**

**Email:** [contactus@trenddatasource.com](mailto:contactus@trenddatasource.com)

**Instagram:** [trenddatasource](https://www.instagram.com/trenddatasource)

**Website/Portfolio:** [trenddatasource.com](https://www.trenddatasource.com)



A fashion runway scene. A model with long brown hair is walking down a dark runway, wearing a dark, double-breasted suit with a high collar and a lace-up detail. The audience is visible in the foreground, holding up phones to capture the moment. The background is dark with some architectural elements.

# INDEX

## 1 COLOR

Global overview of 2026

Spring/Summer season for Menswear

## 2 MACRO-TRENDS

Top runway trends that set the scene for Spring/Summer 2026



# 1/ COLOR

Men's Spring/Summer 2026 will see a sophisticated interplay of colors. Expect to see the grounded elegance of earthy neutrals and soft pastels juxtaposed with the vibrant energy of spicy hues and a range of yellows. Blues will offer a sense of calm and modernity, while bold, digitally-inspired brights provide playful accents, reflecting a season that embraces both heritage and a forward-looking perspective.

|   |   |   |  |  |   |
|---|---|---|--|--|---|
|  <p>PANTONE<br/><b>11-0616 TCX</b><br/>Pastel Yellow</p> <p>RGB 242 230 177<br/>HEX #F2E6B1</p> |  <p>PANTONE<br/><b>12-1505 TCX</b><br/>Rose Bisque</p> <p>RGB 237 214 209<br/>HEX #EDD6D1</p> |  <p>PANTONE<br/><b>14-4123 TCX</b><br/>Clear Sky</p> <p>RGB 155 188 216<br/>HEX #9BBCD8</p>   |  <p>PANTONE<br/><b>12-0108 TCX</b><br/>Canary Green</p> <p>RGB 214 223 201<br/>HEX #D6DFC9</p> |  <p>PANTONE<br/><b>11-0103 TCX</b><br/>Egret</p> <p>RGB 243 236 224<br/>HEX #F3ECE0</p>      |  <p>PANTONE<br/><b>18-0316 TCX</b><br/>Olivine</p> <p>RGB 102 107 84<br/>HEX #666B54</p>      |
|  <p>PANTONE<br/><b>19-1525 TCX</b><br/>Port</p> <p>RGB 102 51 54<br/>HEX #663336</p>           |  <p>PANTONE<br/><b>18-3921 TCX</b><br/>Bijou Blue</p> <p>RGB 78 94 127<br/>HEX #4E5E7F</p>   |  <p>PANTONE<br/><b>18-1856 TCX</b><br/>Virtual Pink</p> <p>RGB 198 23 78<br/>HEX #C6174E</p> |  <p>PANTONE<br/><b>15-0956 TCX</b><br/>Daylily</p> <p>RGB 233 169 0<br/>HEX #E9A900</p>       |  <p>PANTONE<br/><b>15-5534 TCX</b><br/>Bright Green</p> <p>RGB 0 155 92<br/>HEX #009B5C</p> |  <p>PANTONE<br/><b>18-3628 TCX</b><br/>Bellflower</p> <p>RGB 148 105 162<br/>HEX #9469A2</p> |
|  <p>PANTONE<br/><b>16-4535 TCX</b><br/>Blue Atoll</p> <p>RGB 0 177 210<br/>HEX #00B1D2</p>   |  <p>PANTONE<br/><b>17-1461 TCX</b><br/>Orangeade</p> <p>RGB 226 85 45</p>                  |  <p>PANTONE<br/><b>18-1664 TCX</b><br/>Fiery Red</p> <p>RGB 208 28 31</p>                  |  <p>PANTONE<br/><b>15-1516 TCX</b><br/>Peach Beige</p> <p>RGB 211 162 151</p>               |  <p>PANTONE<br/><b>19-3620 TCX</b><br/>Purple Reign</p> <p>RGB 86 69 107</p>              |  <p>PANTONE<br/><b>19-3940 TCX</b><br/>Blue Depths</p> <p>RGB 38 48 86<br/>HEX #263056</p> |
|  <p>PANTONE<br/><b>15-4101 TCX</b><br/>High-Rise</p>   |  <p>PANTONE<br/><b>18-1244 TCX</b><br/>Ginger Bread</p>                                    |  <p>PANTONE<br/><b>19-1218 TCX</b><br/>Potting Soil</p>                                    | CREATED BY  PANTONE®<br>CONNECT   |  |   |

|                 |             |               |
|-----------------|-------------|---------------|
| <b>PANTONE®</b> | 11-0616 TCX | Pastel Yellow |
| <b>PANTONE®</b> | 12-1505 TCX | Rose Bisque   |
| <b>PANTONE®</b> | 14-4123 TCX | Clear Sky     |
| <b>PANTONE®</b> | 12-0108 TCX | Canary Green  |
| <b>PANTONE®</b> | 11-0103 TCX | Egret         |
| <b>PANTONE®</b> | 18-0316 TCX | Olivine       |
| <b>PANTONE®</b> | 19-1525 TCX | Port          |
| <b>PANTONE®</b> | 18-3921 TCX | Bijou Blue    |
| <b>PANTONE®</b> | 18-1856 TCX | Virtual Pink  |
| <b>PANTONE®</b> | 15-0956 TCX | Daylily       |
| <b>PANTONE®</b> | 15-5534 TCX | Bright Green  |
| <b>PANTONE®</b> | 18-3628 TCX | Bellflower    |
| <b>PANTONE®</b> | 16-4535 TCX | Blue Atoll    |
| <b>PANTONE®</b> | 17-1461 TCX | Orangeade     |
| <b>PANTONE®</b> | 18-1664 TCX | Fiery Red     |
| <b>PANTONE®</b> | 15-1516 TCX | Peach Beige   |
| <b>PANTONE®</b> | 19-3620 TCX | Purple Reign  |
| <b>PANTONE®</b> | 19-3940 TCX | Blue Depths   |
| <b>PANTONE®</b> | 15-4101 TCX | High-rise     |
| <b>PANTONE®</b> | 18-1244 TCX | Ginger Bread  |
| <b>PANTONE®</b> | 19-1218 TCX | Potting Soil  |







**PANTONE®**  
11-0616 TCX  
Pastel Yellow



*SS26 indicate a strong presence of yellow, encompassing a spectrum of shades ranging from soft and delicate to vibrant and energetic. Pastel yellow offers a gentle, calming touch, evoking a creamy, subtle warmth. In contrast, daylily yellow is a brighter, more saturated shade, providing a clear, sunny, and energetic pop. This spectrum ensures versatility, allowing for both nuanced elegance and bold statements.*



**PANTONE®**  
15-0956 TCX  
Daylily







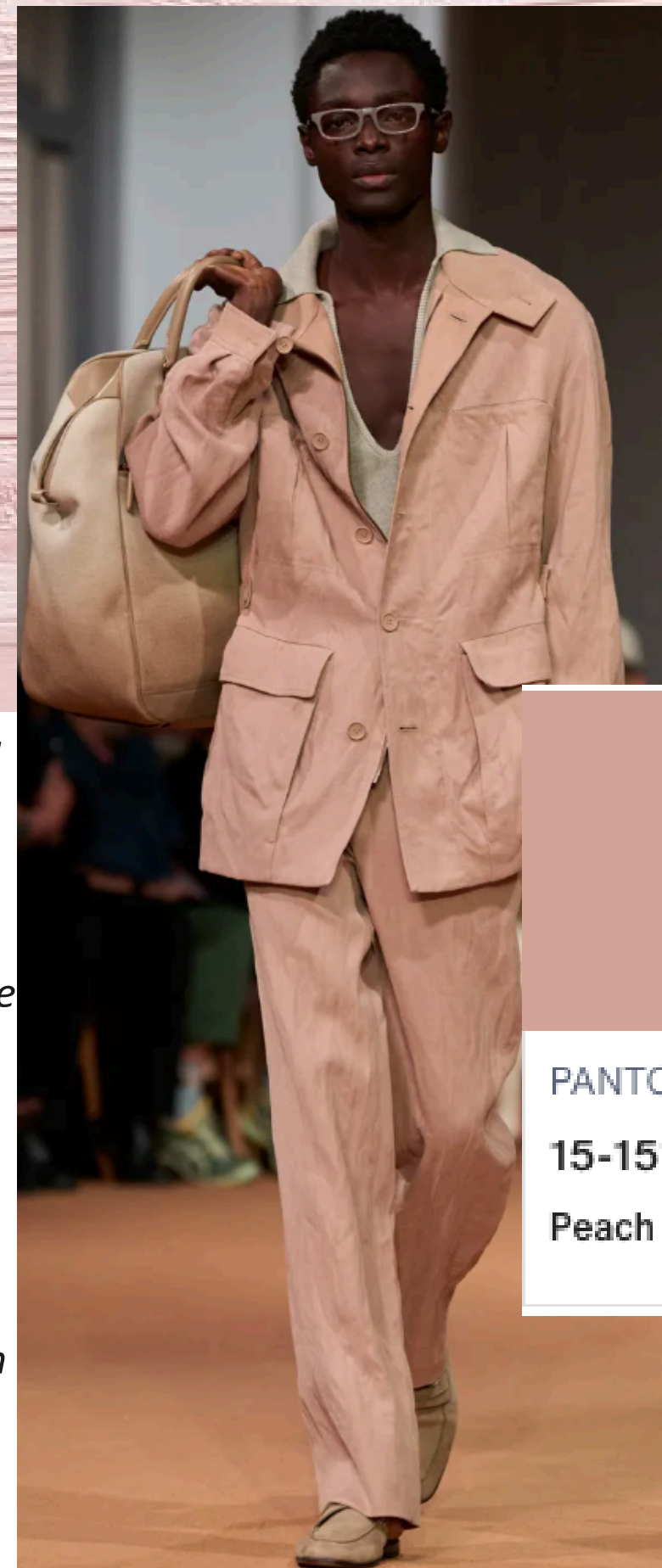
**PANTONE®**  
12-1505 TCX  
Rose Bisque

12-1505 TCX



*Pinks moves beyond traditional perceptions, embracing a sophisticated and earthy spectrum. These aren't your stereotypical bubblegum pinks; instead, they are muted, warm, and often complex, reflecting a desire for comforting and natural hues. The presence of Rose Bisque and Peach Beige for SS26 signals a shift towards a more mature and versatile understanding of pink and its related warm tones in menswear. These shades move away from bold, playful expressions and instead focus on understated luxury, natural comfort, and an earthy sophistication. They allow for tonal layering, creating rich yet subtle palettes that feel both modern and timeless, perfectly aligning with a season that values both well-being and a connection to nature.*

15-1516 TCX



**PANTONE**  
15-1516 TCX  
Peach Beige





**PANTONE®**  
14-4123 TCX  
Clear Sky



*The blues for SS26 create a compelling narrative from light to dark, from the expansive horizon to the profound abyss. Clear Sky brings a sense of refreshing clarity and optimism, Blue Atoll introduces a vibrant, sophisticated tranquility, and Blue Depths grounds the palette with powerful elegance. Together, these shades cater to diverse aesthetics, from relaxed resort wear to refined urban looks, underscoring a season that values both serene escapism and enduring style. They offer a comprehensive blue story that feels both refreshing and deeply sophisticated.*



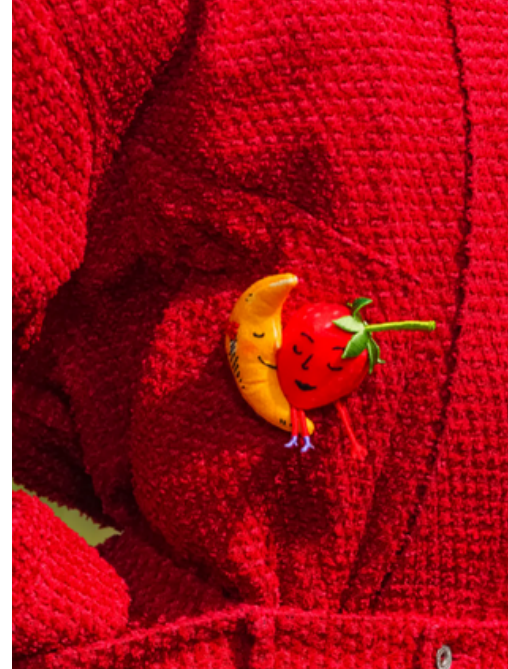
**PANTONE®**  
19-3940 TCX  
Blue Depths

14-4123 TCX

16-4535 TCX

19-3940 TCX





PANTONE  
**18-1664 TCX**  
Fiery Red

*The brights for SS26 — Virtual Pink, Fiery Red, and Orangenade — are about making a bold impact. They collectively represent a fearless embrace of color, driving looks that are energetic, optimistic, and often digitally inspired. These shades are designed to stand out, offering a powerful antidote to more muted palettes and signaling a season of vibrant confidence and expressive individuality in menswear. They are ideal for statement pieces, athletic wear, and injecting high-octane energy into any assortment.*



PANTONE®  
18-1856 TCX  
Virtual Pink





**PANTONE®**  
15-4101 TCX  
**High-rise**



*High-Rise is a mid-tone gray, characterized by its clean, crisp, and somewhat cool undertones. It evokes the sleek, minimalist aesthetic of modern architecture and urban landscapes. This shade of gray is inherently versatile, acting as an elevated base that can seamlessly bridge the gap between casual and formal wear. It projects a sense of composure, understated elegance, and quiet strength, providing a balanced counterpoint to both the season's soft pastels and its vibrant brights. High-Rise gray signifies a refined, intelligent approach to dressing, offering a timeless yet contemporary foundation for the SS26 menswear collection.*







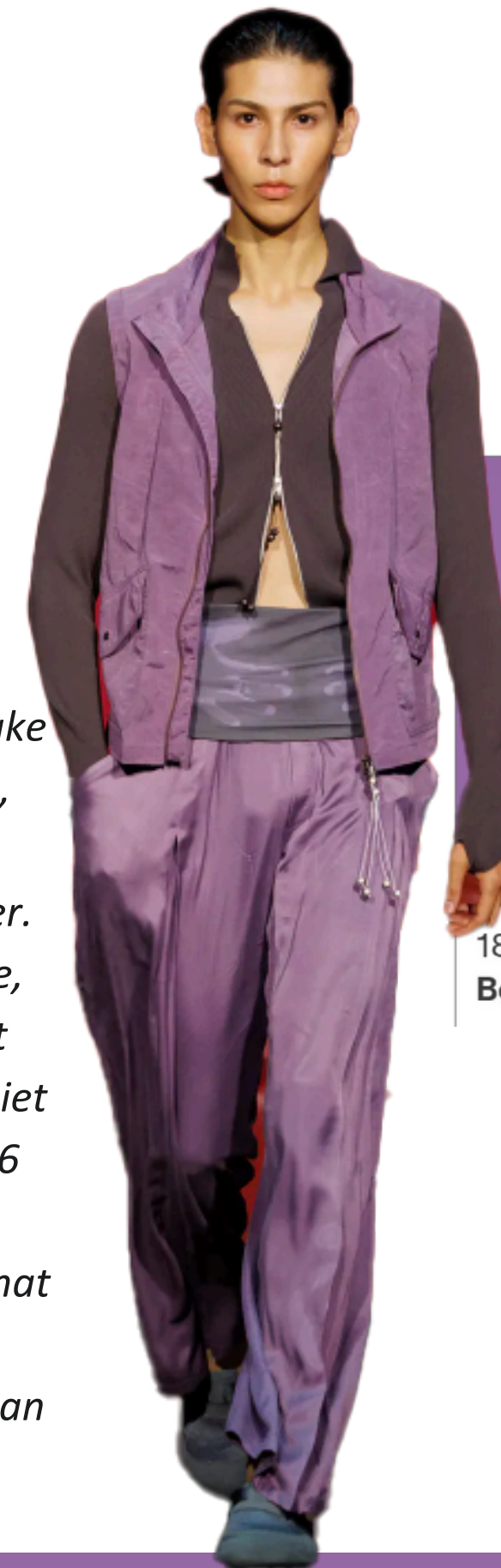
19-3620 TCX

**PANTONE®**  
19-3620 TCX  
**Purple Reign**

*"Purple Reign" is a key theme for SS26. Purples make a nuanced appearance, moving away from deep, regal tones towards more delicate and nature-inspired hues. Leading this subtle shift is Bellflower. Bellflower brings a touch of understated elegance, calm, and subtle optimism to the SS26 palette. It evokes images of tranquil spring gardens and a quiet sophistication. In essence, "Purple Reign" for SS26 encapsulates purple's powerful return to the menswear landscape, offering a range of shades that collectively contribute to a season defined by sophisticated color play, personal expression, and an optimistic outlook.*



19-3620 TCX

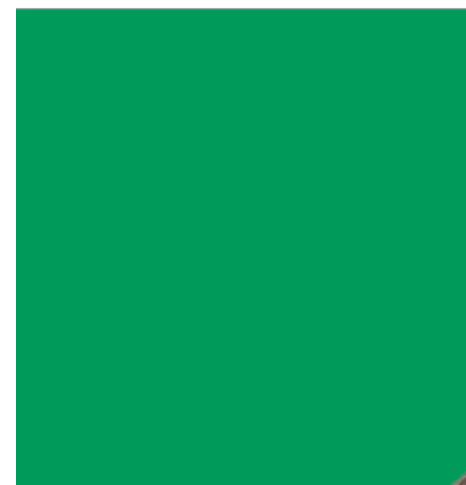


**PANTONE®**  
18-3628 TCX  
**Bellflower**





**PANTONE®**  
12-0108 TCX  
Canary Green



**PANTONE®**  
15-5534 TCX  
Bright Green

*For Men's Spring/Summer 2026, greens on the runway presented a dynamic and multifaceted story, ranging from earthy tranquility to electrifying vibrancy. This season, green acts as a crucial link to nature, well-being, and a renewed sense of energy. The grounded, natural elegance of Olivine provides a sophisticated, almost neutral foundation, while Bright Green and Canary Green inject a powerful dose of optimism, energy, and modernity.*



**PANTONE®**  
18-0316 TCX  
Olivine





**PANTONE®**  
18-1244 TCX  
Ginger Bread

**PANTONE®**  
19-1218 TCX  
Potting Soil

*The browns for SS26, highlighted by Gingerbread, Potting Soil, and Port, collectively tell a story of layered sophistication and grounding elegance. Gingerbread offers a comforting and inviting warmth, Potting Soil provides a raw, natural depth, and Port introduces a luxurious, refined richness. This spectrum allows for versatile application, from relaxed, earthy looks to polished, formal statements, underscoring brown's crucial role as a sophisticated and multifaceted core color in the Spring/Summer 2026 menswear landscape.*



**PANTONE®**  
19-1525 TCX  
Port



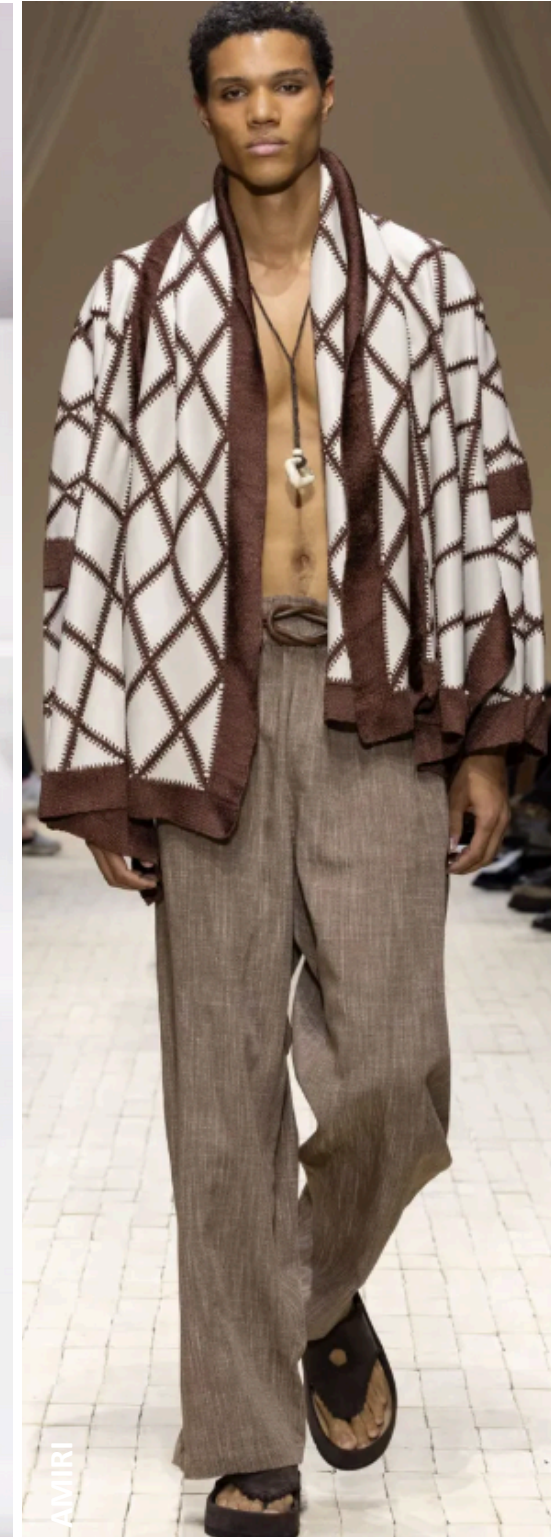
## 2 / MACRO TRENDS

Men's Spring/Summer 2026 fashion is a dynamic conversation between relaxed elegance, playful confidence, and a grounding connection to nature and heritage. The season offers a nuanced blend of familiar comfort reimagined with sophisticated tailoring, bold color choices, and unexpected material applications. Men's Spring/Summer 2026 is about a more personal and expressive approach to dressing, where comfort, refined craft, and a bold embrace of color converge to redefine modern masculinity.



## FLUID FORMALITY

Fluid Formality defines the prevailing menswear aesthetic for Spring/Summer 2026, where traditional structure gives way to an effortless, sophisticated ease. This trend redefines what it means to be "dressed up," blending the polished appeal of classic tailoring with the comfort and movement of more relaxed silhouettes. Comfort remains paramount, evolving from pandemic-era loungewear to refined, unlined suits and soft, draped silhouettes. Think wide-leg trousers, oversized shirts, and relaxed blazers in breathable fabrics like linen, silk, and cotton blends. Pyjama dressing makes a strong case for sophisticated daywear, seen at Dolce & Gabbana and Emporio Armani.

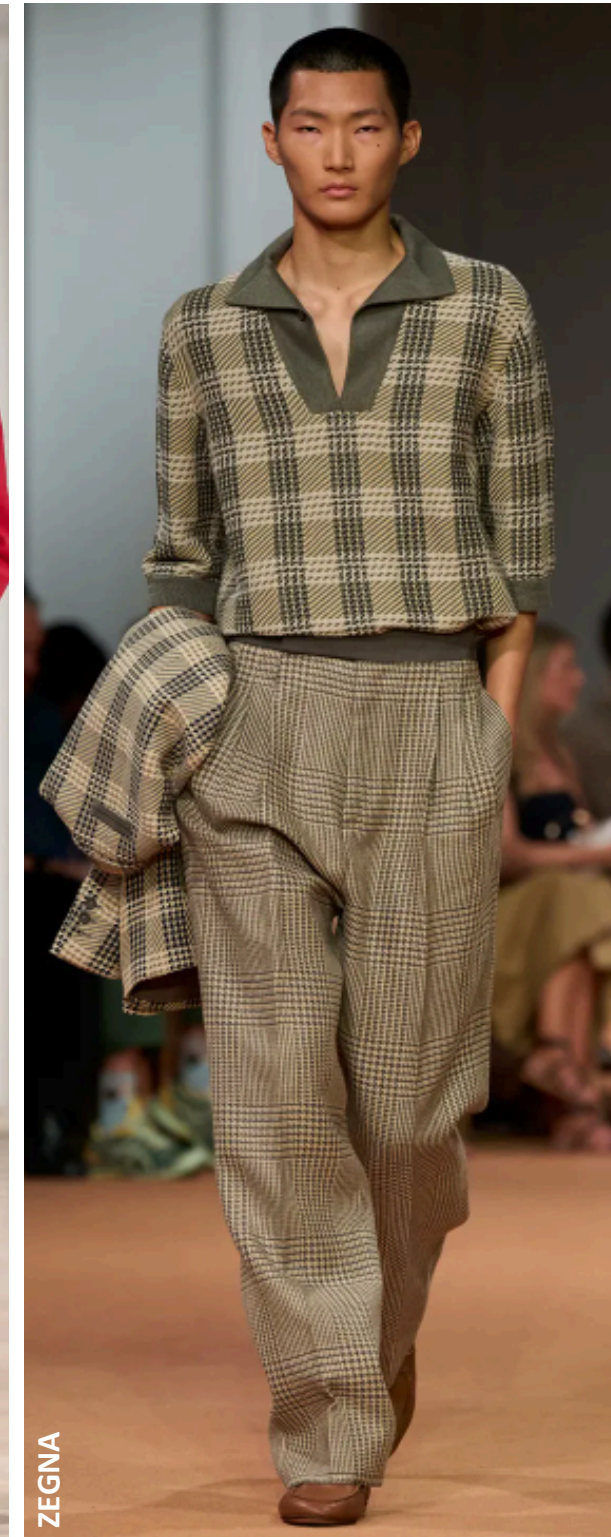


*thetrend*



## IVY LEAGUE

The Ivy League trend for SS26 is about a conscious return to quality, heritage, and a sophisticated approach to everyday dressing, infused with a relaxed confidence that feels perfectly suited for the warmer months. The core pieces remain: tweed tailoring, Bengal stripes, knitted vests, chinos, and refined eyewear. The trend supports intelligent layering – a knitted vest over a striped shirt, or a lightweight blazer over a polo. Incorporate modern elements to prevent the look from feeling dated. This could include slight oversized fits on knitwear, unexpected fabric choices for classic items (e.g., linen blazers), or subtle color pops in accessories.



*thetrend*



## THE NEW UTILITY

A sophisticated evolution of functional fashion, blending rugged practicality with elevated design. It's less about traditional workwear uniforms and more about incorporating utilitarian elements into a refined, modern wardrobe. The focus is on practical details rendered with a luxurious touch. Think oversized cargo pockets, adjustable hems, strategic zippers, and durable, technical fabrics that are often lightweight and breathable.

Typically grounded in earthy neutrals like various khakis, beiges, olives (like Olivine), and deep browns (like Potting Soil). However, it's often punctuated with pops of more vibrant, sometimes neon, brights for a modern, high-visibility twist.

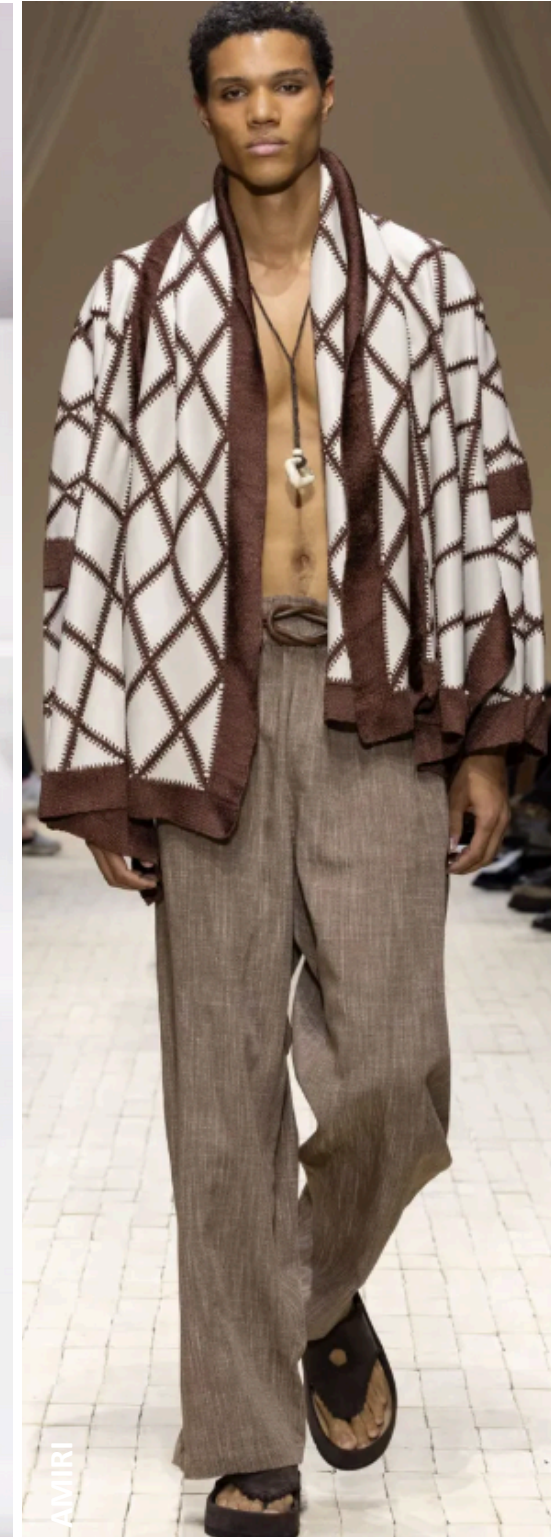


# *thetrend*



## URBAN ATHLETICISM

Urban Athleticism defines a pivotal trend for Men's Spring/Summer 2026, where the dynamic energy of sportswear is seamlessly integrated with the polished demands of city life. This trend moves beyond casual gym wear, elevating athletic influences through refined fabrics, thoughtful tailoring, and a sophisticated color palette, making them suitable for diverse urban environments – from the commute to social gatherings. Think track pants in luxurious silk or tailored wool blends, hoodies crafted from premium technical knits, and bomber jackets in lustrous satins or innovative nylons. Pieces are designed to be easily layered and adapted for various situations, offering flexibility from day to night, work to weekend.



*thetrend*